

Strategies for Setting Up and Operating your VHF Station for Contesting

Strategies for Setting Up and Operating your VHF Station for Contesting

The secrets to bigger contest scores

What I do

What I do

Stay in the chair



What I do

Stay in the chair



What I do

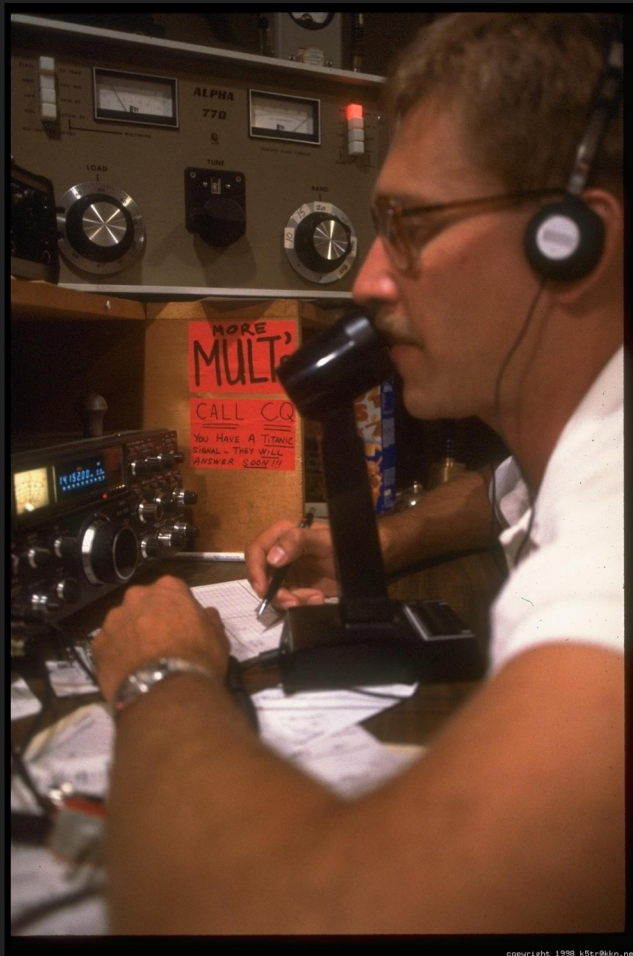
Stay in the chair



What I do

Stay in the chair

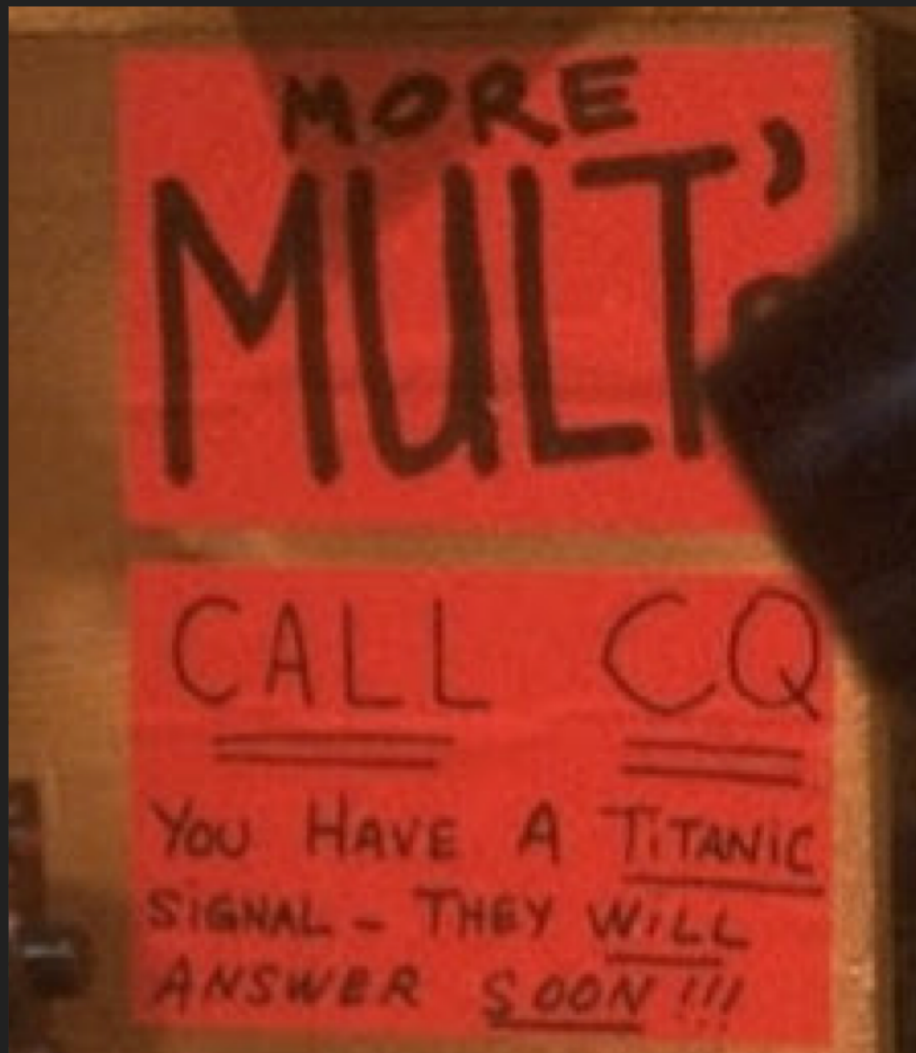
Call CQ



What I do

Stay in the chair

Call CQ



What I do

Stay in the chair

Call CQ

Track Rovers



What I do

Stay in the chair

Call CQ

Track Rovers



What I do

Stay in the chair

Call CQ

Track Rovers



What I do

Stay in the chair

Call CQ

Track Rovers

Two radios



What I do

Stay in the chair

Call CQ

Track Rovers

Two radios - or more



What I do

Stay in the chair

Call CQ

Track Rovers

Two radios - or more



What I do

Stay in the chair

Call CQ

Track Rovers

Two radios - or more

Ask everyone for other bands



The image shows a well-equipped ham radio station. On the top shelf, two large black amplifiers (AL-1500) are prominently displayed. In the center, a computer monitor shows a software interface with various data fields, including a frequency display of 4.286 MHz. To the left of the monitor, a power supply and a microphone are visible. To the right, a keyboard and a mouse are present. The background features a map of the United States and a poster of ZL9CI. The overall setup is organized and functional for amateur radio operations.



Two Radio Switch



Transverters



Amps



Amps



Amps



Antennas

Antennas for all bands on one mast



Antennas

Antennas for all bands on one mast

7 element 50

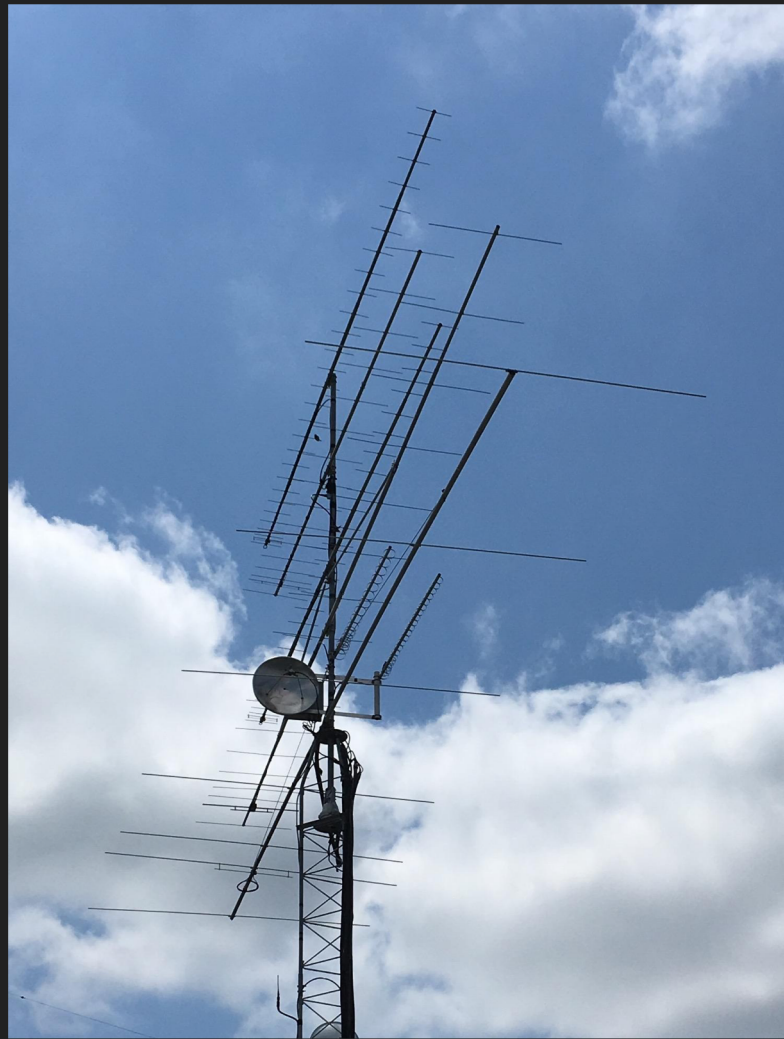


Antennas

Antennas for all bands on one mast

7 element 50

17 element 144



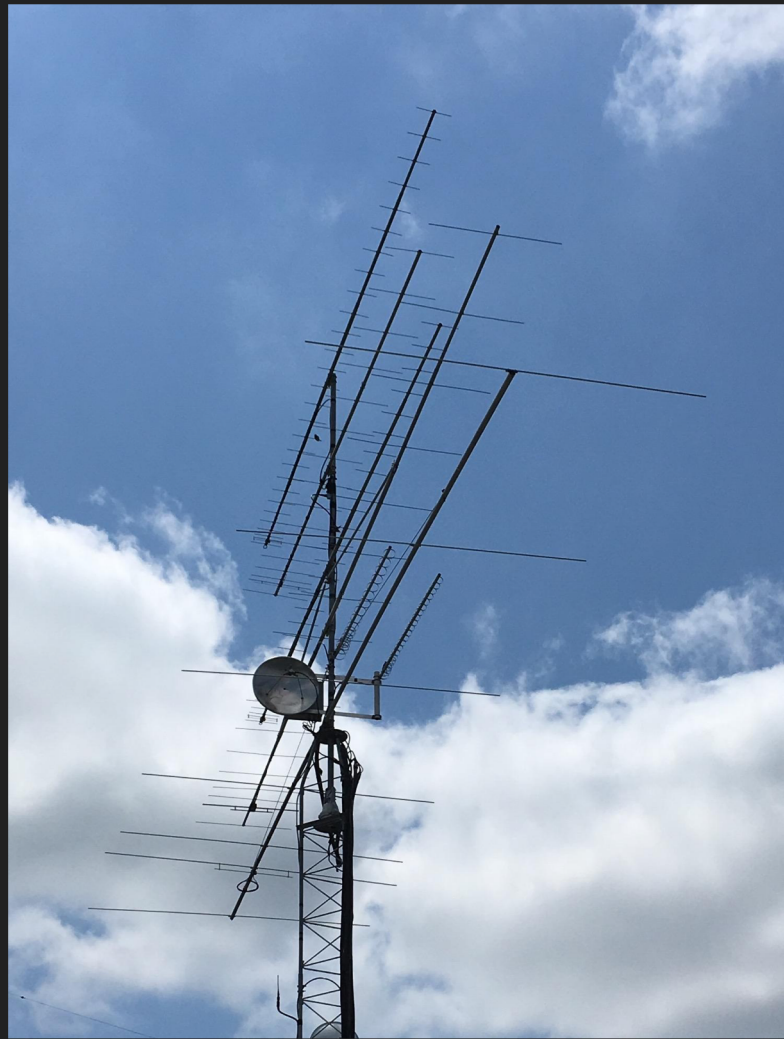
Antennas

Antennas for all bands on one mast

7 element 50

17 element 144

16 element 222



Antennas

Antennas for all bands on one mast

7 element 50

17 element 144

16 element 222

28 element x 2 432



Antennas

Antennas for all bands on one mast

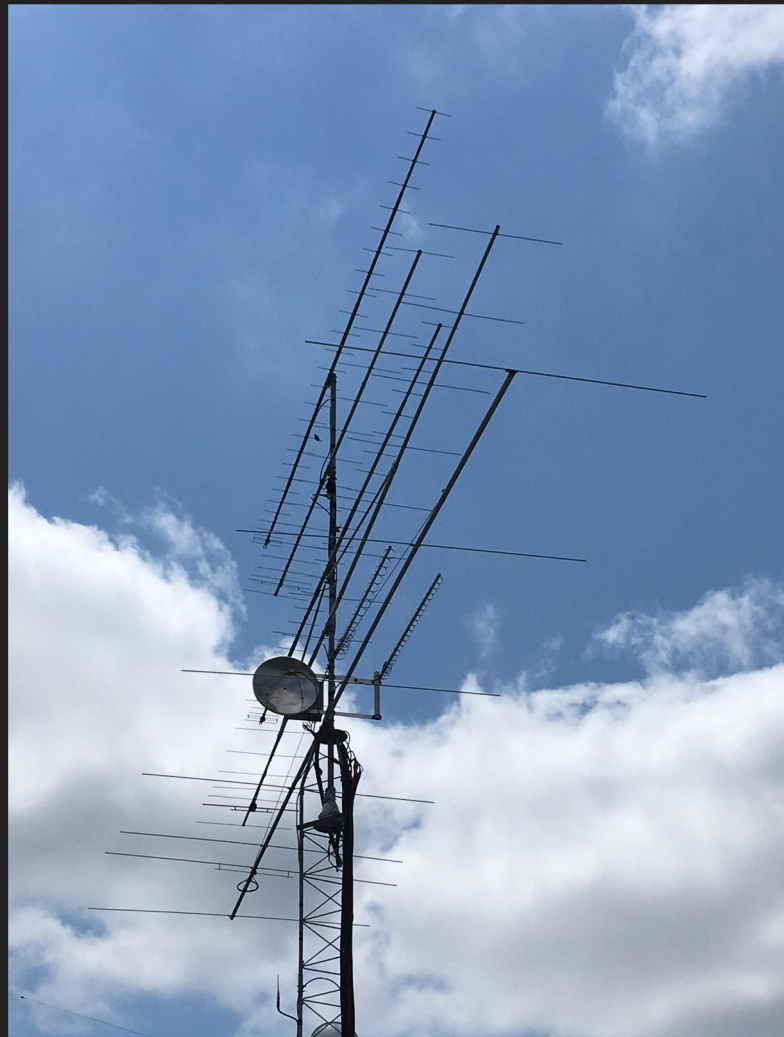
7 element 50

17 element 144

16 element 222

28 element x 2 432

18 element 902



Antennas

Antennas for all bands on one mast

7 element 50

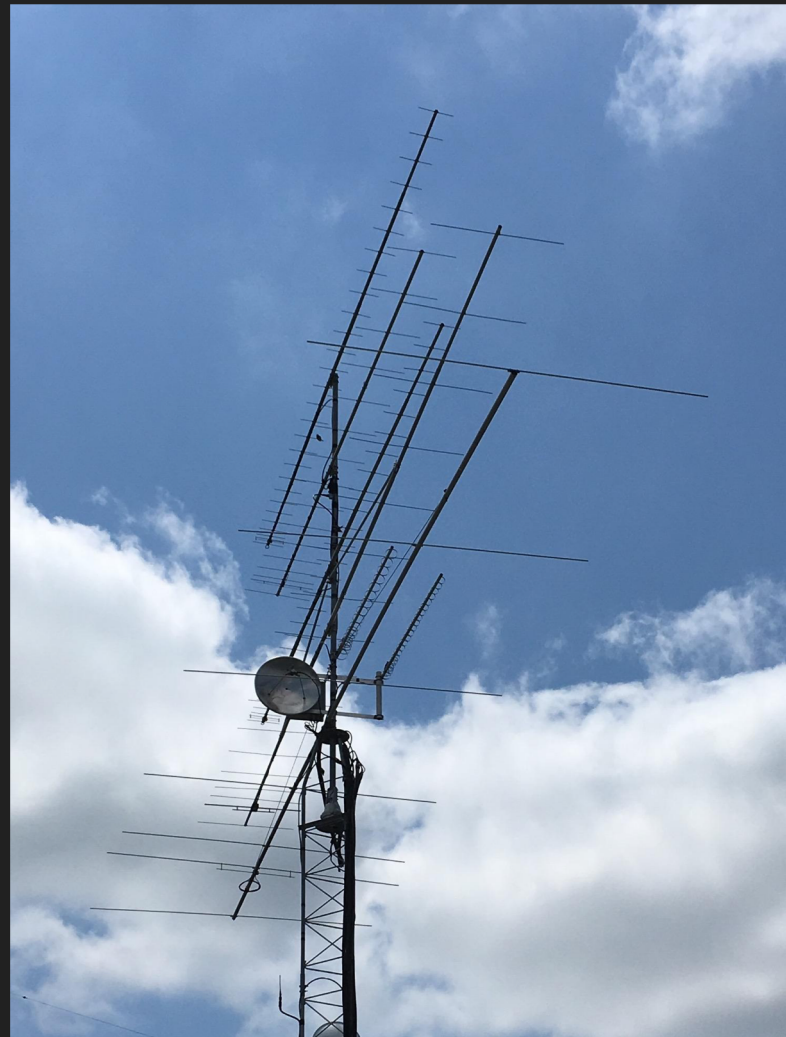
17 element 144

16 element 222

28 element x 2 432

18 element 902

24 element 1296



Antennas

Antennas for all bands on one mast

7 element 50

17 element 144

16 element 222

28 element x 2 432

18 element 902

24 element 1296

60 cm dish 10g



Antennas

Additional antennas for important bands



Antennas

Additional antennas for important bands

Fixed direction antennas



Antennas

Fixed antennas



Antennas

Fixed antennas



Antennas

50Mhz

7 element yagi at 75'

7 element yagi at 30'

7 element yagi at 25' fixed Northeast

7 element yagi at 30' fixed Northwest

5 element yagi at 50' fixed Southeast

pair of phased vertical dipoles

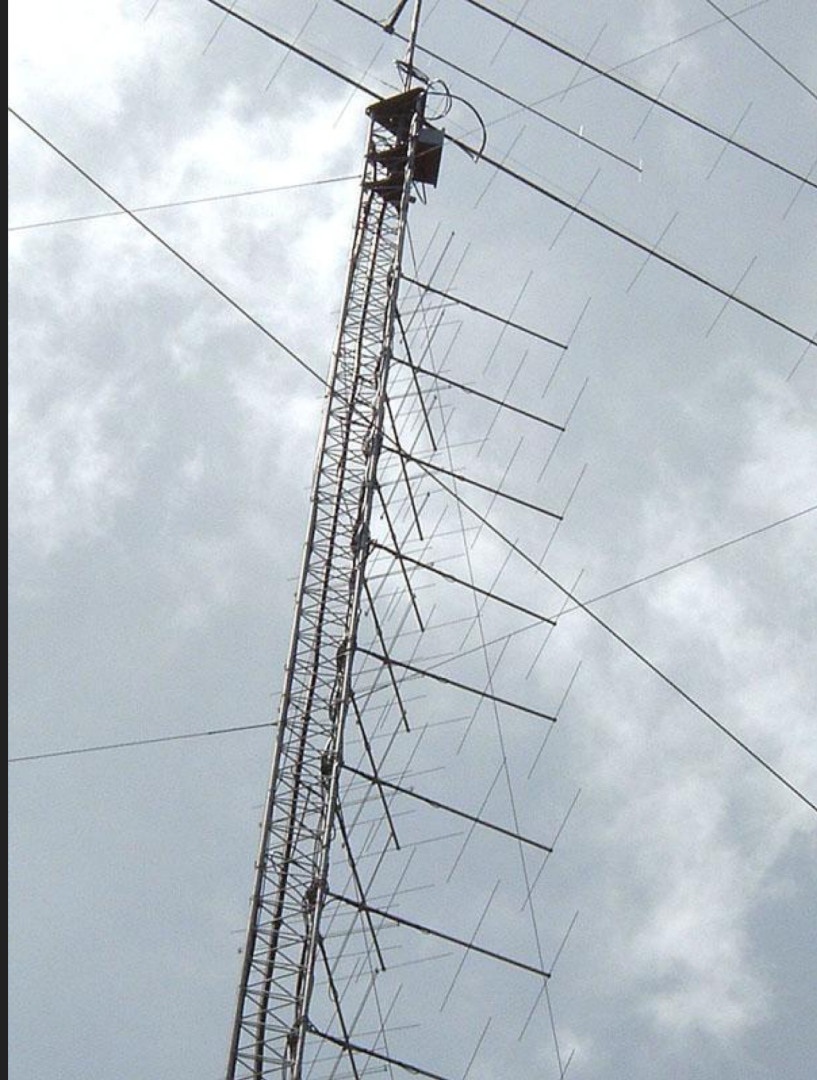
144Mhz

17B2 17 element yagi at 35'

FO12 12 element yagi at 60' Fixed NW





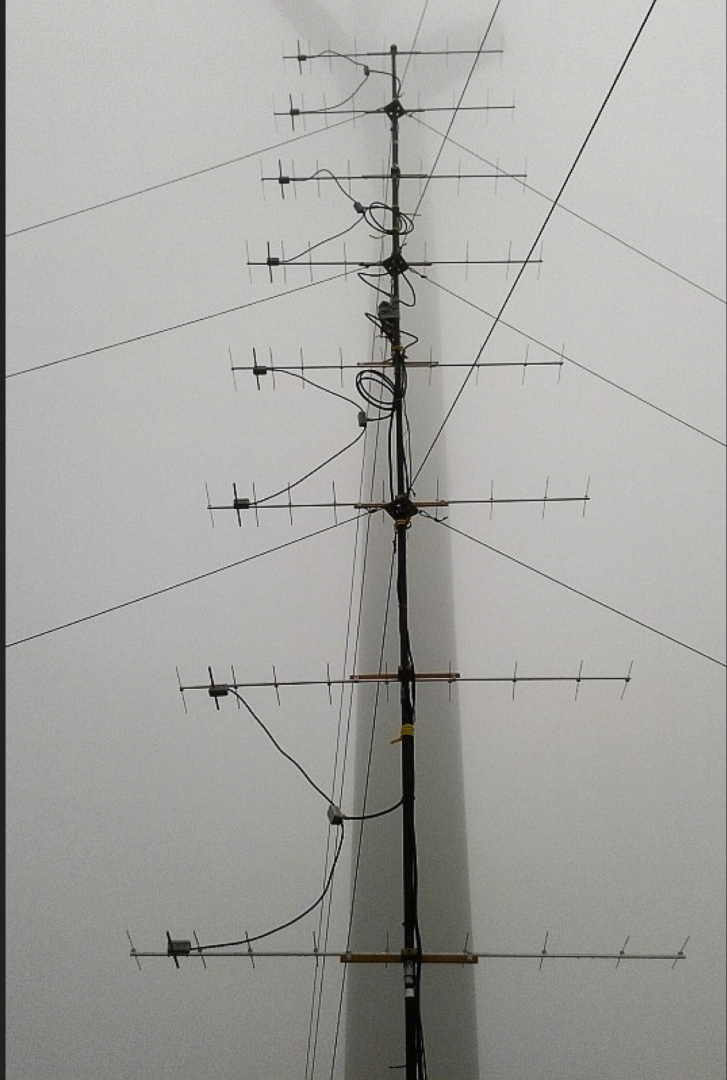


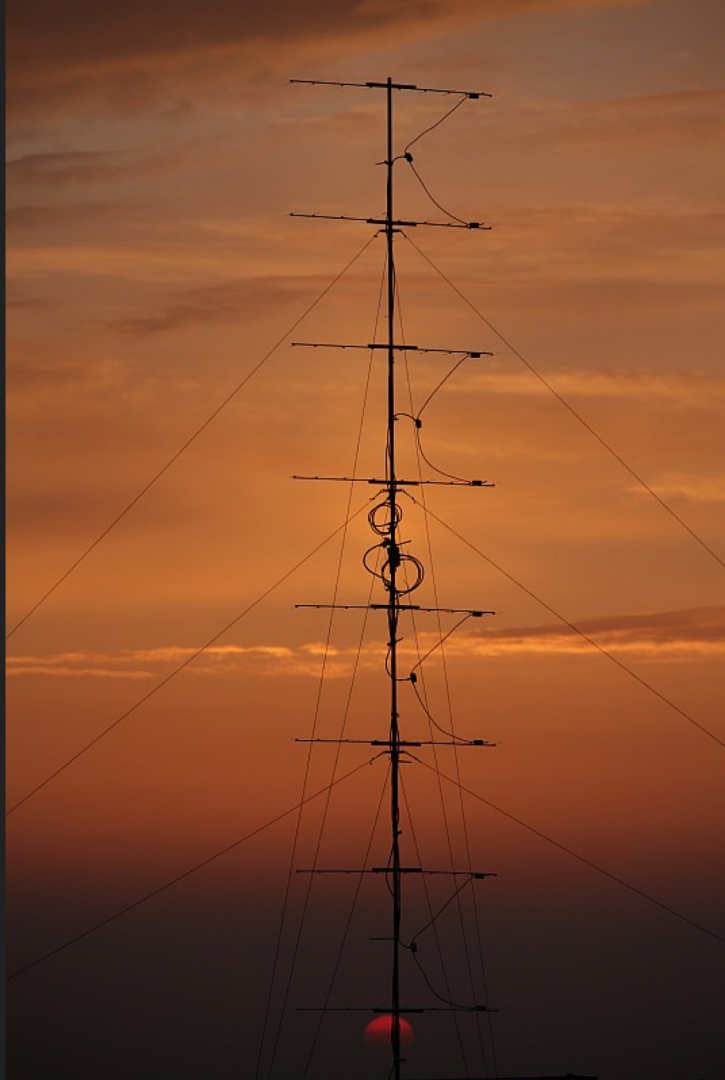
Antennas

Wide azimuth arrays

As much gain as possible







What can you do within the current rules

More than one signal even for S/O



What can you do within the current rules

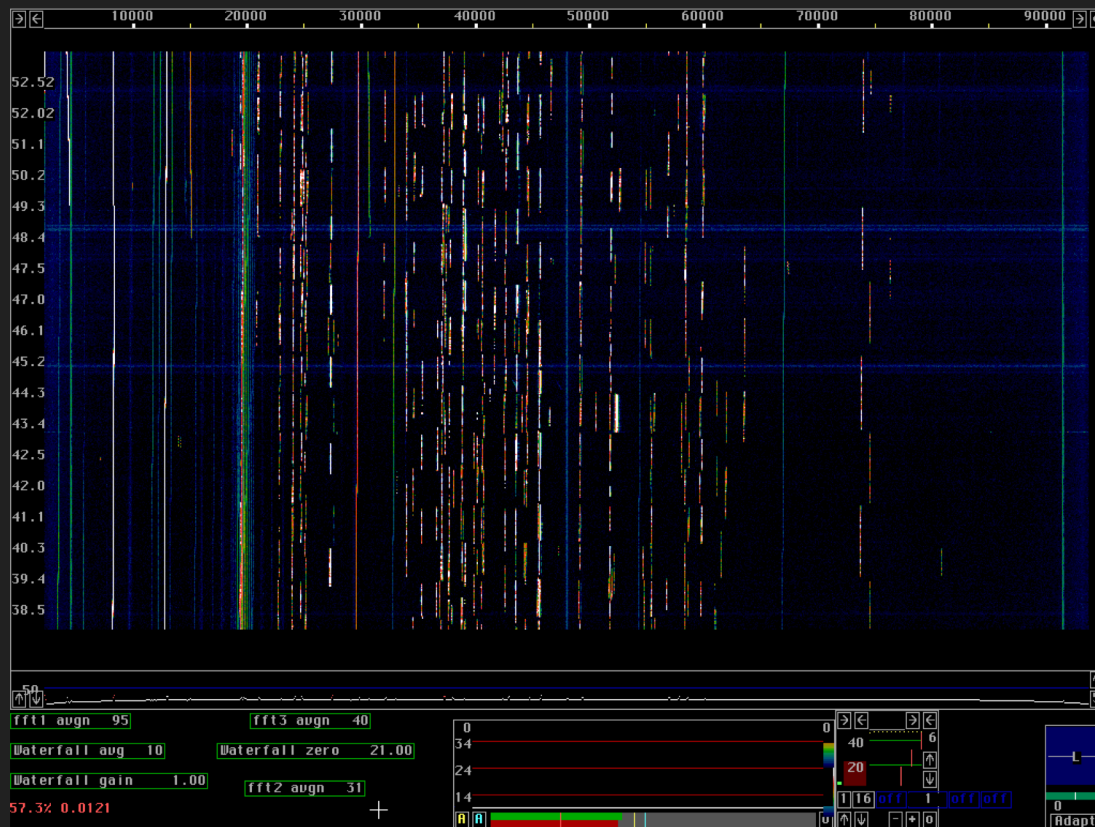
146.52

TEMPO VHF/ONE PLUS



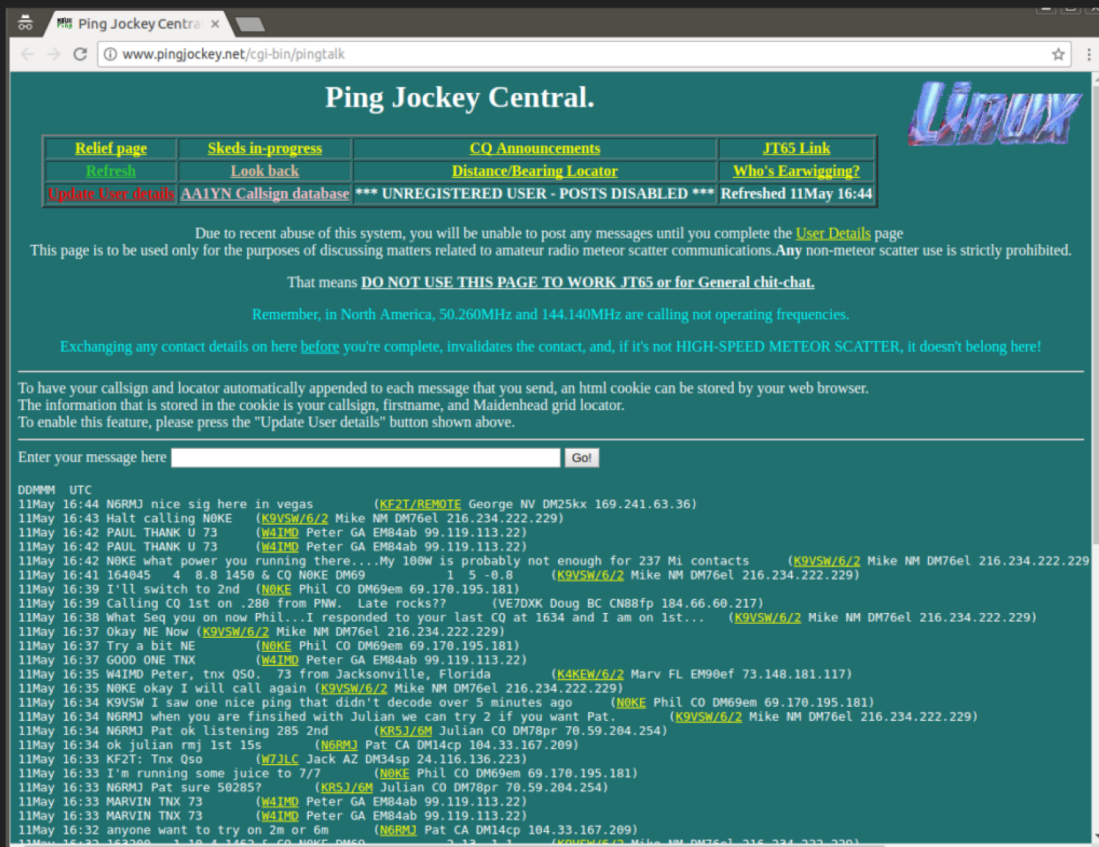
What can you do within the current rules

Digital modes



What can you do within the current rules

Assistance



The screenshot shows the Ping Jockey Central website. At the top, there's a navigation bar with links: Relief page, Skeds in-progress, CQ Announcements, JT65 Link, Refresh, Look back, Distance/Bearing Locator, and Who's Earwiggling?. Below this is a table with four columns: Relief page, Skeds in-progress, CQ Announcements, and JT65 Link. The table contains links to various pages and a status message: '*** UNREGISTERED USER - POSTS DISABLED ***'. Below the table, there's a warning message: 'Due to recent abuse of this system, you will be unable to post any messages until you complete the User Details page. This page is to be used only for the purposes of discussing matters related to amateur radio meteor scatter communications. Any non-meteor scatter use is strictly prohibited. That means DO NOT USE THIS PAGE TO WORK JT65 or for General chit-chat. Remember, in North America, 50.260MHz and 144.140MHz are calling not operating frequencies. Exchanging any contact details on here before you're complete, invalidates the contact, and, if it's not HIGH-SPEED METEOR SCATTER, it doesn't belong here!'. Below this is a message input form with a text box and a 'Go!' button. The bottom section shows a log of messages, including callsigns, locations, and times.

Relief page	Skeds in-progress	CQ Announcements	JT65 Link
Refresh	Look back	Distance/Bearing Locator	Who's Earwiggling?
Update User details	AA1YN Callsign database	*** UNREGISTERED USER - POSTS DISABLED ***	Refreshed 11May 16:44

Due to recent abuse of this system, you will be unable to post any messages until you complete the [User Details](#) page. This page is to be used only for the purposes of discussing matters related to amateur radio meteor scatter communications. Any non-meteor scatter use is strictly prohibited. That means **DO NOT USE THIS PAGE TO WORK JT65 or for General chit-chat**. Remember, in North America, 50.260MHz and 144.140MHz are calling not operating frequencies. Exchanging any contact details on here before you're complete, invalidates the contact, and, if it's not HIGH-SPEED METEOR SCATTER, it doesn't belong here!

To have your callsign and locator automatically appended to each message that you send, an html cookie can be stored by your web browser. The information that is stored in the cookie is your callsign, firstname, and Maidenhead grid locator. To enable this feature, please press the "Update User details" button shown above.

Enter your message here

DDMMYY UTC

11May 16:44 N6RMJ nice sig here in vegas (KF2T/REMOTE George NV DM25kx 169.241.63.36)

11May 16:43 Halt calling N0KE (K9VSW/6/2 Mike NM DM76el 216.234.222.229)

11May 16:42 PAUL THANK U 73 (W4IMD) Peter GA EM84ab 99.119.113.22)

11May 16:42 PAUL THANK U 73 (W4IMD) Peter GA EM84ab 99.119.113.22)

11May 16:42 N0KE what power you running there...My 100W is probably not enough for 237 Mi contacts (K9VSW/6/2 Mike NM DM76el 216.234.222.229)

11May 16:41 164045 4 8.8 1450 & CQ N0KE DM69 1 5 -0.8 (K9VSW/6/2 Mike NM DM76el 216.234.222.229)

11May 16:39 I'll switch to 2nd (N0KE Phil CO DM69em 69.170.195.181)

11May 16:39 Calling CQ 1st on .280 from PWM. Late rocks?? (VE7DXK Doug BC CN88fp 184.66.60.217)

11May 16:38 What Seq you on now Phil...I responded to your last CQ at 1634 and I am on 1st... (K9VSW/6/2 Mike NM DM76el 216.234.222.229)

11May 16:37 Okay NE Now (K9VSW/6/2 Mike NM DM76el 216.234.222.229)

11May 16:37 Try a bit NE (N0KE Phil CO DM69em 69.170.195.181)

11May 16:37 GOOD ONE TNX (W4IMD) Peter GA EM84ab 99.119.113.22)

11May 16:35 W4IMD Peter. tnx 050. 73 from Jacksonville, Florida (K4KEW/6/2 Marv FL EM90ef 73.148.181.117)

11May 16:35 N0KE okay I will call again (K9VSW/6/2 Mike NM DM76el 216.234.222.229)

11May 16:34 K9VSW I saw one nice ping that didn't decode over 5 minutes ago (N0KE Phil CO DM69em 69.170.195.181)

11May 16:34 N6RMJ when you are finsihed with Julian we can try 2 if you want Pat. (K9VSW/6/2 Mike NM DM76el 216.234.222.229)

11May 16:34 N6RMJ Pat ok listening 285 2nd. (KRSJ/6M Julian CO DM78pr 70.59.204.254)

11May 16:34 ok julian rmj 1st 15s (N6RMJ Pat CA DM14cp 104.33.167.209)

11May 16:33 KF2T: Tnx Qso (W7JLC Jack AZ DM34sp 24.116.136.223)

11May 16:33 I'm running some juice to 7/7 (N0KE Phil CO DM69em 69.170.195.181)

11May 16:33 N6RMJ Pat sure 50285? (KRSJ/6M Julian CO DM78pr 70.59.204.254)

11May 16:33 MARVIN TNX 73 (W4IMD) Peter GA EM84ab 99.119.113.22)

11May 16:33 MARVIN TNX 73 (W4IMD) Peter GA EM84ab 99.119.113.22)

11May 16:32 anyone want to try on 2m or 6m (N6RMJ Pat CA DM14cp 104.33.167.209)

11May 16:32 162200 1 10 4 1462 6 CQ N0KE DM69 1 5 -0.8 (K9VSW/6/2 Mike NM DM76el 216.234.222.229)

What can you do within the current rules

Assistance



